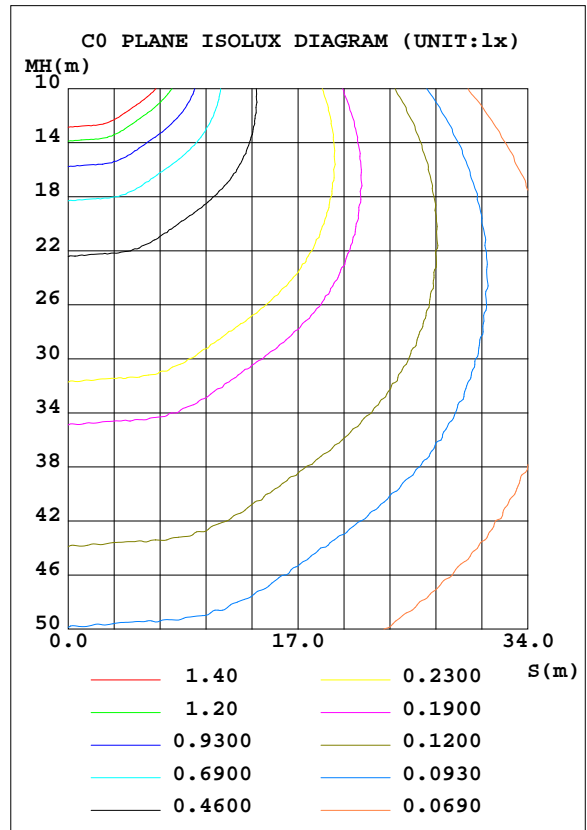
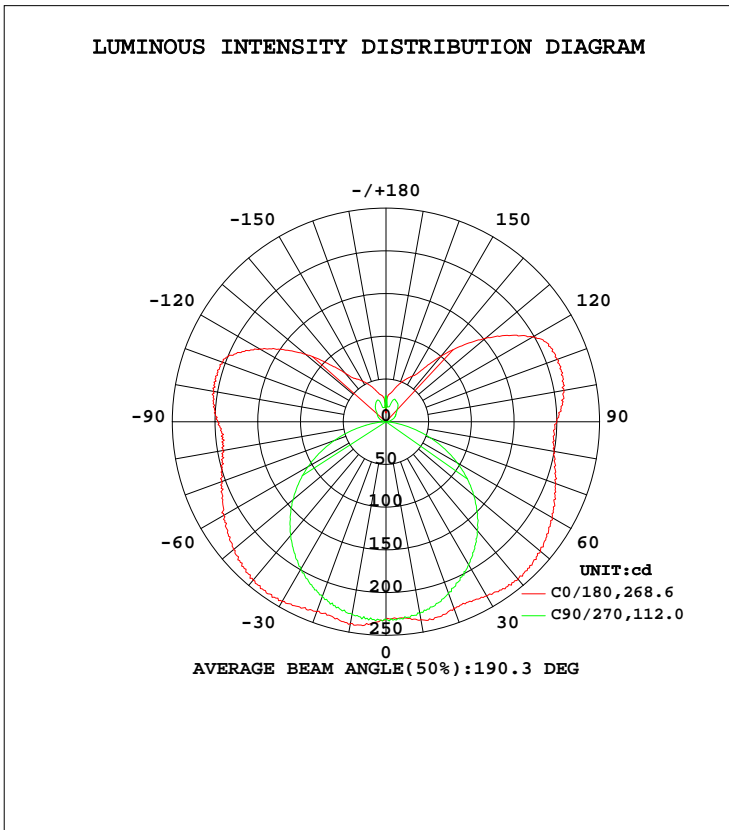


LUMINAIRE PHOTOMETRIC TEST REPORT

Test:U:120.18V I:0.2341A P:27.900W PF:0.9916 Freq:60.00Hz Lamp Flux:1633.83x1 lm		
NAME:	TYPE:	WEIGHT:
SPEC.:	DIM.:	SERIAL No.:
MFR.:	SUR.:	Shielding Angle:

DATA OF LAMP		PHOTOMETRIC DATA Eff: 58.56 lm/W			
MODEL	VN27-36-30S-952C5-MVTD-SB00-5000K	I _{max} (cd)	245.0	S/MH(C0/180)	1.60
NOMINAL POWER(W)	28	LOR(%)	100.0	S/MH(C90/270)	1.27
RATED VOLTAGE(V)	120	TOTAL FLUX(lm)	1633.8	η UP, DN(C0-180)	17.6, 32.3
NOMINAL FLUX(lm)	1633.83	CIE CLASS	SEMI-D.	η UP, DN(C180-360)	17.1, 32.9
LAMPS INSIDE	1	η up(%)	34.8	CIBSE SHR NOM	1.50
TEST VOLTAGE(V)	120	η down(%)	65.2	CIBSE SHR MAX	1.55



C Range: 0 - 360DEG
C Interval: 22.5DEG
Test Speed: HIGH
Temperature:25.1DEG
Operators:Wilson
Test Date:2022-12-09

γ Range: 0 - 180DEG
γ Interval: 0.5DEG
Test System:EVERFINE GO-R5000_V2 SYSTEM V2.00.444
Humidity:60.5%
Test Distance:2.617m [K=1.0000]
Remarks: File No.: WT-F-504-3206-01-A

Checker: Near Gao

Assessor: Akin Xu

ZONAL FLUX DIAGRAM

ZONAL FLUX DIAGRAM:

γ	C0	C45	C90	C135	C180	C225	C270	C315	γ	Φ zone	Φ total	%lum, lamp
10	235.2	230.0	227.9	237.6	239.9	238.8	229.0	231.5	0- 10	22.24	22.24	1.36,1.36
20	232.1	227.8	213.8	228.6	236.4	231.5	217.8	230.4	10- 20	65.48	87.72	5.37,5.37
30	235.5	212.9	193.5	218.8	243.3	222.1	199.2	216.3	20- 30	103.0	190.7	11.7,11.7
40	240.2	204.0	166.7	209.7	242.3	212.9	173.7	207.8	30- 40	133.8	324.5	19.9,19.9
50	235.9	192.1	134.0	196.1	232.8	198.1	142.0	199.1	40- 50	154.1	478.6	29.3,29.3
60	224.3	173.3	96.44	175.9	219.7	176.6	105.4	182.5	50- 60	161.4	639.9	39.2,39.2
70	211.6	150.6	55.32	154.0	204.9	151.9	64.40	161.1	60- 70	155.8	795.7	48.7,48.7
80	199.6	130.7	16.50	136.3	194.3	130.6	24.11	141.3	70- 80	141.1	936.8	57.3,57.3
90	199.9	128.7	0.5656	138.0	197.1	125.2	0.9604	136.2	80- 90	128.9	1066	65.2,65.2
100	211.2	138.9	3.247	145.8	205.5	132.7	2.218	146.8	90-100	133.8	1200	73.4,73.4
110	213.4	142.1	7.863	134.1	204.2	125.9	6.108	150.1	100-110	132.8	1332	81.6,81.6
120	198.5	114.4	12.24	101.1	170.6	94.54	10.28	122.8	110-120	112.5	1445	88.4,88.4
130	152.2	79.77	15.57	65.10	123.1	59.88	13.55	86.32	120-130	79.91	1525	93.3,93.3
140	100.2	53.83	21.28	52.37	74.37	46.82	18.85	57.44	130-140	49.55	1574	96.4,96.4
150	61.88	46.47	26.30	43.18	55.05	39.35	24.23	48.23	140-150	29.86	1604	98.2,98.2
160	47.76	38.04	28.08	34.64	41.12	32.37	27.07	38.65	150-160	18.39	1623	99.3,99.3
170	34.44	24.52	17.87	23.49	31.62	29.21	17.05	32.47	160-170	9.013	1632	99.9,99.9
180	15.40	15.40	15.40	15.40	15.35	15.35	15.35	15.35	170-180	2.241	1634	100,100
DEG	LUMINOUS INTENSITY:cd									UNIT:lm		

Conical surface Flux(90deg): 399.77 lm

%lum = 24.5%
 %lamp = 24.5%

Conical surface Flux(120deg): 639.94 lm

%lum = 39.2%
 %lamp = 39.2%

C Range: 0 - 360DEG
 C Interval: 22.5DEG
 Test Speed: HIGH
 Temperature:25.1DEG
 Operators:Wilson
 Test Date:2022-12-09

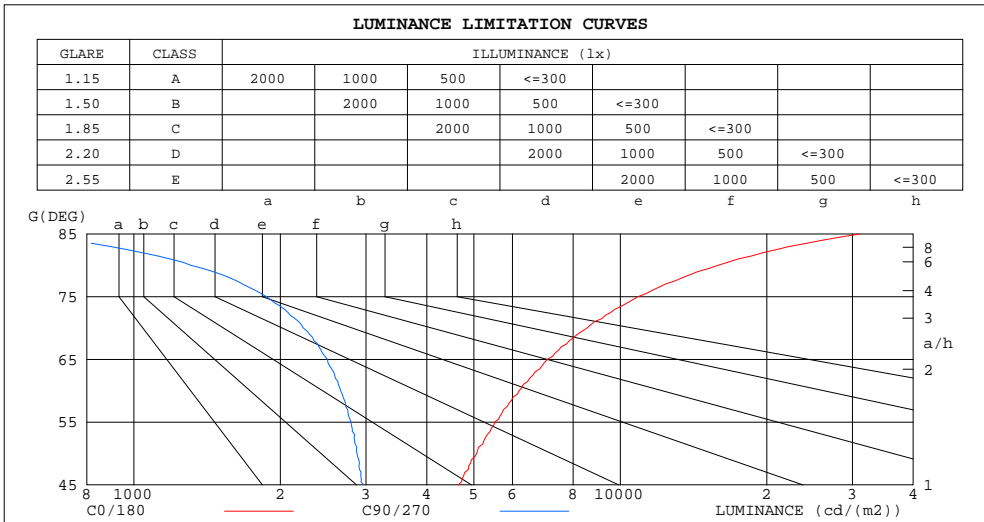
γ Range: 0 - 180DEG
 γ Interval: 0.5DEG
 Test System:EVERFINE GO-R5000_V2 SYSTEM V2.00.444
 Humidity:60.5%
 Test Distance:2.617m [K=1.0000]
 Remarks: File No.: WT-F-504-3206-01-A

Checker: Near Gao

Assessor: Akin Xu

LUMINANCE LIMITATION CURVES

Test:U:120.18V I:0.2341A P:27.900W PF:0.9916 Freq:60.00Hz Lamp Flux:1633.83x1 lm		
NAME:	TYPE:	WEIGHT:
SPEC.:	DIM.:	SERIAL No.:
MFR.:	SUR.:	Shielding Angle:



C Range: 0 - 360DEG
 C Interval: 22.5DEG
 Test Speed: HIGH
 Temperature: 25.1DEG
 Operators: Wilson
 Test Date: 2022-12-09

γ Range: 0 - 180DEG
 γ Interval: 0.5DEG
 Test System: EVERFINE GO-R5000_V2 SYSTEM V2.00.444
 Humidity: 60.5%
 Test Distance: 2.617m [K=1.0000]
 Remarks: File No.: WT-F-504-3206-01-A

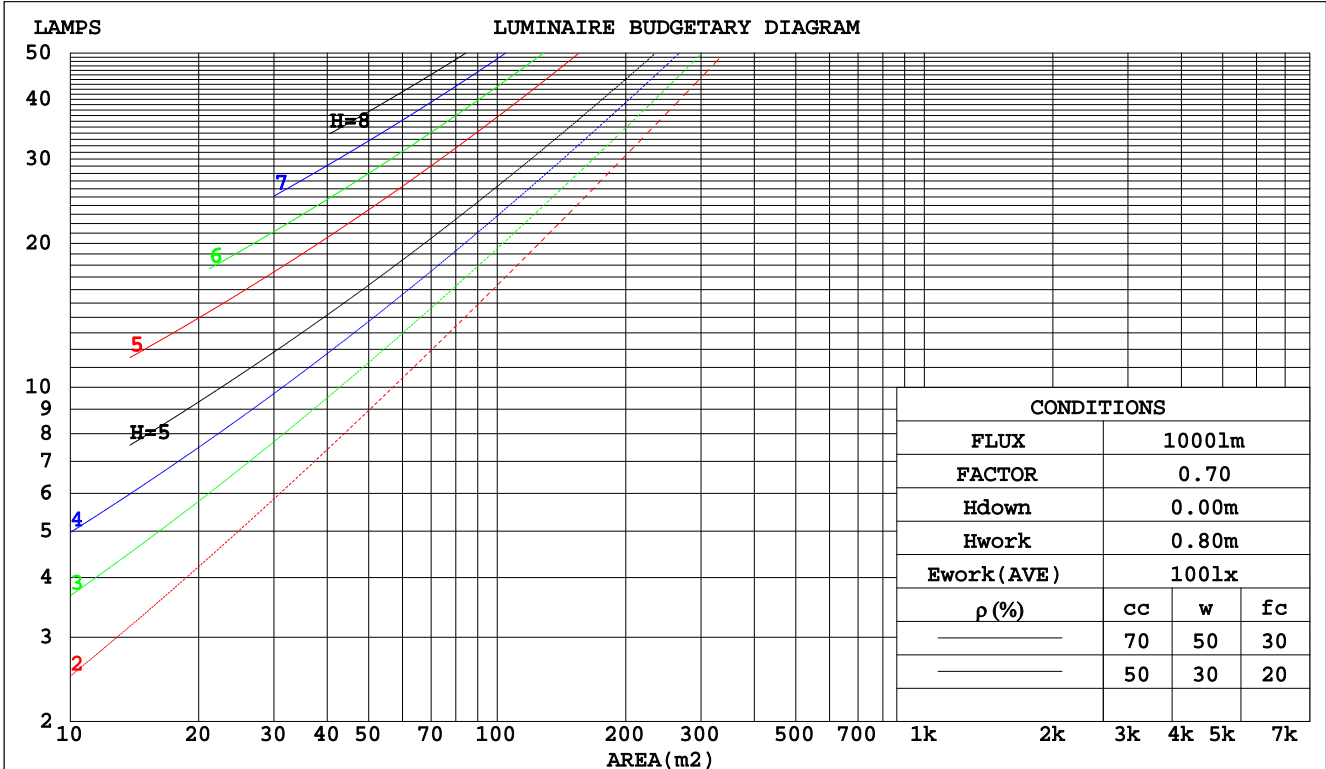
Checker: Near Gao

Assessor: Akin Xu

CU AND LUMINAIRE BUDGETARY ESTIMATE DIAGRAM

Test:U:120.18V I:0.2341A P:27.900W PF:0.9916 Freq:60.00Hz Lamp Flux:1633.83x1 lm		
NAME:	TYPE:	WEIGHT:
SPEC.:	DIM.:	SERIAL No.:
MFR.:	SUR.:	Shielding Angle:

pcc	80%			70%			50%			30%			10%			0
	50%	30%	10%	50%	30%	10%	50%	30%	10%	50%	30%	10%	50%	30%	10%	0
pw																
pfc	20%			20%			20%			20%			20%			0
RCR	RCR:Room Cavity Ratio						Coefficients of Utilization(CU)									
0.0	1.11	1.11	1.11	1.04	1.04	1.04	.92	.92	.92	.80	.80	.80	.70	.70	.70	.65
1.0	.92	.86	.81	.86	.81	.77	.75	.71	.68	.65	.62	.60	.56	.54	.52	.47
2.0	.78	.70	.64	.73	.66	.60	.64	.58	.54	.55	.51	.47	.47	.44	.41	.37
3.0	.67	.59	.51	.63	.55	.49	.55	.49	.43	.48	.43	.38	.41	.37	.33	.30
4.0	.59	.50	.43	.55	.47	.40	.48	.42	.36	.42	.36	.32	.36	.32	.28	.25
5.0	.52	.43	.36	.49	.41	.34	.43	.36	.31	.37	.32	.27	.32	.27	.24	.21
6.0	.47	.37	.31	.44	.35	.29	.38	.32	.26	.34	.28	.23	.29	.24	.21	.18
7.0	.42	.33	.27	.39	.31	.26	.35	.28	.23	.30	.25	.20	.26	.22	.18	.15
8.0	.38	.29	.24	.36	.28	.22	.32	.25	.20	.28	.22	.18	.24	.19	.16	.14
9.0	.35	.26	.21	.33	.25	.20	.29	.22	.18	.25	.20	.16	.22	.18	.14	.12
10.0	.32	.24	.19	.30	.23	.18	.27	.20	.16	.23	.18	.14	.20	.16	.13	.11



C Range: 0 - 360DEG
 C Interval: 22.5DEG
 Test Speed: HIGH
 Temperature:25.1DEG
 Operators:Wilson
 Test Date:2022-12-09

γ Range: 0 - 180DEG
 γ Interval: 0.5DEG
 Test System:EVERFINE GO-R5000_V2 SYSTEM V2.00.444
 Humidity:60.5%
 Test Distance:2.617m [K=1.0000]
 Remarks: File No.: WT-F-504-3206-01-A

Checker: Near Gao

Assessor: Akin Xu

WEC AND CCEC

Test:U:120.18V I:0.2341A P:27.900W PF:0.9916 Freq:60.00Hz		
Lamp Flux:1633.83x1 lm		
NAME:	TYPE:	WEIGHT:
SPEC.:	DIM.:	SERIAL No.:
MFR.:	SUR.:	Shielding Angle:

ρcc	80%			70%			50%			30%			10%			0
ρw	50%	30%	10%	50%	30%	10%	50%	30%	10%	50%	30%	10%	50%	30%	10%	0
ρfc	20%			20%			20%			20%			20%			0
RCR	RCR:Room Cavity Ratio						Wall Exitance Coefficients(WEC)									
0.0																
1.0	.387	.220	.070	.369	.211	.067	.336	.193	.062	.305	.176	.056	.277	.161	.052	
2.0	.331	.181	.056	.315	.173	.053	.284	.158	.049	.256	.144	.045	.230	.130	.041	
3.0	.292	.156	.047	.278	.149	.045	.250	.135	.041	.224	.123	.038	.201	.111	.034	
4.0	.262	.136	.040	.249	.130	.038	.224	.119	.035	.200	.108	.032	.178	.097	.030	
5.0	.238	.121	.035	.226	.116	.034	.203	.106	.031	.181	.096	.028	.161	.086	.026	
6.0	.218	.109	.031	.207	.104	.030	.185	.095	.028	.165	.086	.025	.147	.077	.023	
7.0	.201	.099	.028	.190	.095	.027	.171	.086	.025	.152	.078	.023	.135	.070	.021	
8.0	.186	.091	.026	.177	.087	.025	.158	.079	.023	.141	.072	.021	.125	.064	.019	
9.0	.173	.084	.023	.164	.080	.022	.148	.073	.021	.132	.066	.019	.117	.059	.017	
10.0	.162	.078	.022	.154	.074	.021	.138	.068	.019	.123	.061	.017	.109	.055	.016	

ρcc	80%			70%			50%			30%			10%			0
ρw	50%	30%	10%	50%	30%	10%	50%	30%	10%	50%	30%	10%	50%	30%	10%	0
ρfc	20%			20%			20%			20%			20%			0
RCR	RCR:Room Cavity Ratio						Ceiling Cavity Exitance Coefficients(CCEC)									
0.0	.455	.455	.455	.389	.389	.389	.266	.266	.266	.153	.153	.153	.049	.049	.049	
1.0	.453	.423	.395	.387	.363	.340	.265	.249	.235	.153	.144	.137	.049	.046	.044	
2.0	.446	.401	.362	.382	.345	.313	.262	.239	.218	.151	.139	.128	.048	.045	.042	
3.0	.439	.385	.341	.376	.332	.296	.258	.231	.208	.149	.135	.122	.048	.044	.040	
4.0	.432	.373	.328	.370	.322	.285	.255	.224	.201	.147	.131	.119	.047	.043	.039	
5.0	.424	.363	.319	.364	.314	.277	.251	.220	.196	.145	.129	.116	.047	.042	.038	
6.0	.417	.356	.312	.358	.308	.272	.247	.216	.192	.143	.127	.114	.046	.041	.038	
7.0	.410	.349	.307	.353	.303	.267	.244	.212	.190	.142	.125	.113	.046	.041	.037	
8.0	.404	.344	.303	.347	.298	.264	.240	.210	.188	.140	.124	.112	.045	.041	.037	
9.0	.398	.339	.300	.342	.295	.262	.237	.207	.186	.138	.122	.111	.045	.040	.037	
10.0	.392	.335	.298	.338	.291	.260	.234	.205	.185	.137	.121	.110	.044	.040	.037	

C Range: 0 - 360DEG
 C Interval: 22.5DEG
 Test Speed: HIGH
 Temperature:25.1DEG
 Operators:Wilson
 Test Date:2022-12-09

γ Range: 0 - 180DEG
 γ Interval: 0.5DEG
 Test System:EVERFINE GO-R5000_V2 SYSTEM V2.00.444
 Humidity:60.5%
 Test Distance:2.617m [K=1.0000]
 Remarks: File No.: WT-F-504-3206-01-A

Checker: Near Gao

Assessor: Akin Xu

UGR(Unified Glare Rating) Table

Test:U:120.18V I:0.2341A P:27.900W PF:0.9916 Freq:60.00Hz										
Lamp Flux:1633.83x1 lm										
NAME:			TYPE:				WEIGHT:			
SPEC.:			DIM.:				SERIAL No.:			
MFR.:			SUR.:				Shielding Angle:			
ceiling/cavity	0.7	0.7	0.5	0.5	0.3	0.7	0.7	0.5	0.5	0.3
walls	0.5	0.3	0.5	0.3	0.3	0.5	0.3	0.5	0.3	0.3
working plane	0.2	0.2	0.2	0.2	0.2	0.2	0.2	0.2	0.2	0.2
Room dimensions	Viewed crosswise					Viewed endwise				
x = 2H y = 2H	17.2	18.4	17.9	19.1	20.0	13.8	15.0	14.5	15.7	16.6
3H	20.2	21.3	20.9	22.0	23.0	15.2	16.3	16.0	17.1	18.0
4H	21.9	22.9	22.6	23.7	24.6	15.8	16.8	16.5	17.6	18.5
6H	23.8	24.8	24.6	25.5	26.5	16.1	17.1	16.9	17.8	18.8
8H	24.9	25.8	25.7	26.6	27.6	16.1	17.1	16.9	17.9	18.8
12H	26.1	27.0	26.9	27.8	28.8	16.2	17.1	16.9	17.9	18.8
4H 2H	17.7	18.7	18.4	19.5	20.4	15.4	16.4	16.1	17.2	18.1
3H	20.9	21.8	21.7	22.6	23.6	17.1	18.0	17.9	18.8	19.8
4H	22.8	23.6	23.6	24.5	25.5	17.8	18.6	18.6	19.5	20.5
6H	25.0	25.7	25.8	26.5	27.6	18.4	19.1	19.2	19.9	21.0
8H	26.2	26.9	27.0	27.7	28.8	18.5	19.2	19.4	20.1	21.1
12H	27.6	28.2	28.4	29.1	30.1	18.6	19.3	19.5	20.1	21.2
8H 4H	23.1	23.8	24.0	24.6	25.7	19.3	20.0	20.2	20.9	21.9
6H	25.6	26.1	26.4	27.0	28.1	20.4	20.9	21.2	21.8	22.9
8H	27.0	27.5	27.9	28.4	29.5	20.8	21.3	21.7	22.2	23.3
12H	28.7	29.2	29.6	30.1	31.2	21.1	21.6	22.0	22.5	23.6
12H 4H	23.1	23.7	24.0	24.6	25.7	19.9	20.5	20.7	21.4	22.5
6H	25.7	26.2	26.5	27.1	28.2	21.2	21.8	22.1	22.6	23.8
8H	27.2	27.7	28.1	28.6	29.7	21.9	22.4	22.8	23.3	24.4
Variations with the observer position at spacings(CIE Pub.117):										
S = 1.0H	+ 0.1 / - 0.1					+ 0.1 / - 0.1				
1.5H	+ 0.2 / - 0.3					+ 0.2 / - 0.2				
2.0H	+ 0.3 / - 0.4					+ 0.3 / - 0.4				

CIE Pub.117, 1634 lm Total Lamp Luminous Flux Corrected (8log(F/F0) = 1.7)
 Area: 0.07248 m2

C Range: 0 - 360DEG
 C Interval: 22.5DEG
 Test Speed: HIGH
 Temperature:25.1DEG
 Operators:Wilson
 Test Date:2022-12-09

γ Range: 0 - 180DEG
 γ Interval: 0.5DEG
 Test System:EVERFINE GO-R5000_V2 SYSTEM V2.00.444
 Humidity:60.5%
 Test Distance:2.617m [K=1.0000]
 Remarks: File No.: WT-F-504-3206-01-A

Checker: Near Gao

Assessor: Akin Xu

UTILIZATION FACTORS TABLE

Test:U:120.18V I:0.2341A P:27.900W PF:0.9916 Freq:60.00Hz Lamp Flux:1633.83x1 lm		
NAME:	TYPE:	WEIGHT:
SPEC.:	DIM.:	SERIAL No.:
MFR.:	SUR.:	Shielding Angle:

REFLECTANCE										
Ceiling	0.8	0.8	0.8	0.7	0.7	0.7	0.5	0.5	0.5	0
Walls	0.7	0.5	0.3	0.7	0.5	0.3	0.7	0.5	0.3	0
Working plane	0.2	0.2	0.2	0.2	0.2	0.2	0.2	0.2	0.2	0
ROOM INDEX	UTILIZATION FACTORS(PERCENT) k(RI) x RCR = 5									
k = 0.60	42	29	22	40	29	22	38	27	21	14
0.80	51	37	29	49	36	29	45	34	27	19
1.00	58	45	36	56	43	35	51	42	33	23
1.25	65	52	43	62	50	42	56	46	39	28
1.50	70	57	48	67	55	47	60	51	43	31
2.00	78	66	57	74	63	55	66	57	51	36
2.50	83	72	63	78	68	60	70	62	55	39
3.00	87	76	68	82	73	65	72	65	59	42
4.00	92	83	76	86	79	72	76	70	65	46
5.00	95	87	81	89	82	77	79	74	69	49
ROOM INDEX	UF(total)									Direct
According to DIN EN 13032-2 2004			Suspended				SHRNOM = 1.25			

C Range: 0 - 360DEG
 C Interval: 22.5DEG
 Test Speed: HIGH
 Temperature:25.1DEG
 Operators:Wilson
 Test Date:2022-12-09

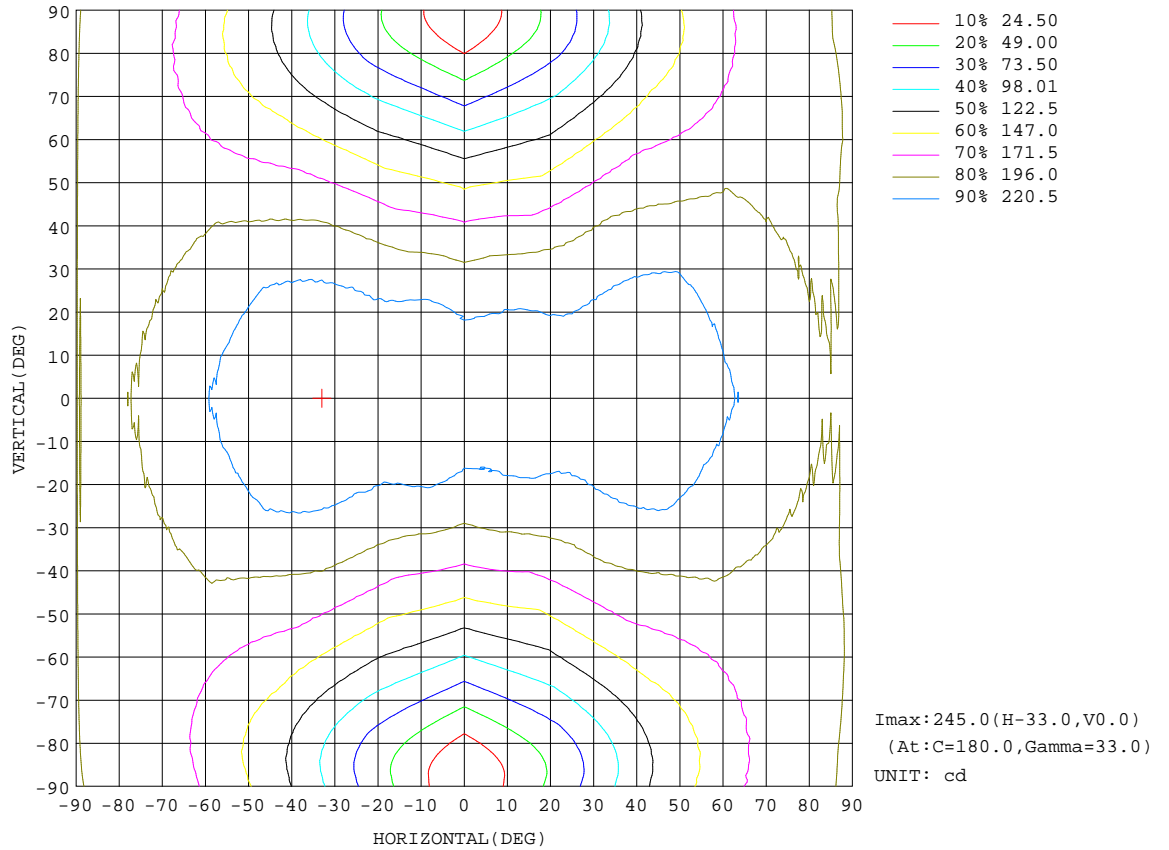
γ Range: 0 - 180DEG
 γ Interval: 0.5DEG
 Test System:EVERFINE GO-R5000_V2 SYSTEM V2.00.444
 Humidity:60.5%
 Test Distance:2.617m [K=1.0000]
 Remarks: File No.: WT-F-504-3206-01-A

Checker: Near Gao

Assessor: Akin Xu

ISOCANDELA DIAGRAM

Test:U:120.18V I:0.2341A P:27.900W PF:0.9916 Freq:60.00Hz Lamp Flux:1633.83x1 lm		
NAME:	TYPE:	WEIGHT:
SPEC.:	DIM.:	SERIAL No.:
MFR.:	SUR.:	Shielding Angle:



C Range: 0 - 360DEG
 C Interval: 22.5DEG
 Test Speed: HIGH
 Temperature: 25.1DEG
 Operators: Wilson
 Test Date: 2022-12-09

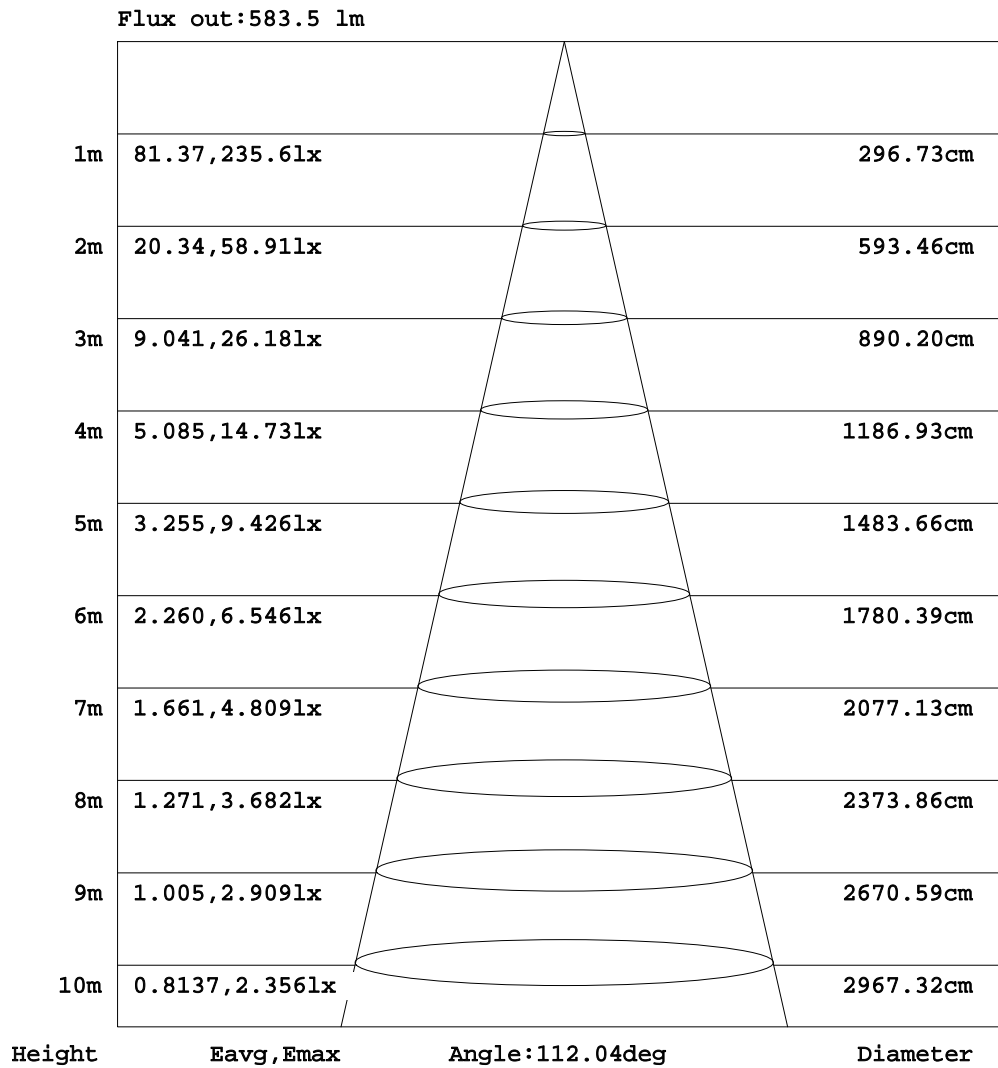
γ Range: 0 - 180DEG
 γ Interval: 0.5DEG
 Test System: EVERFINE GO-R5000_V2 SYSTEM V2.00.444
 Humidity: 60.5%
 Test Distance: 2.617m [K=1.0000]
 Remarks: File No.: WT-F-504-3206-01-A

Checker: Near Gao

Assessor: Akin Xu

AAI Figure

Test:U:120.18V I:0.2341A P:27.900W PF:0.9916 Freq:60.00Hz Lamp Flux:1633.83x1 lm		
NAME:	TYPE:	WEIGHT:
SPEC.:	DIM.:	SERIAL No.:
MFR.:	SUR.:	Shielding Angle:



Note: The Curves indicate the illuminated area and the average illumination when the luminaire is at different distance.

C Range: 0 - 360DEG
 C Interval: 22.5DEG
 Test Speed: HIGH
 Temperature: 25.1DEG
 Operators: Wilson
 Test Date: 2022-12-09

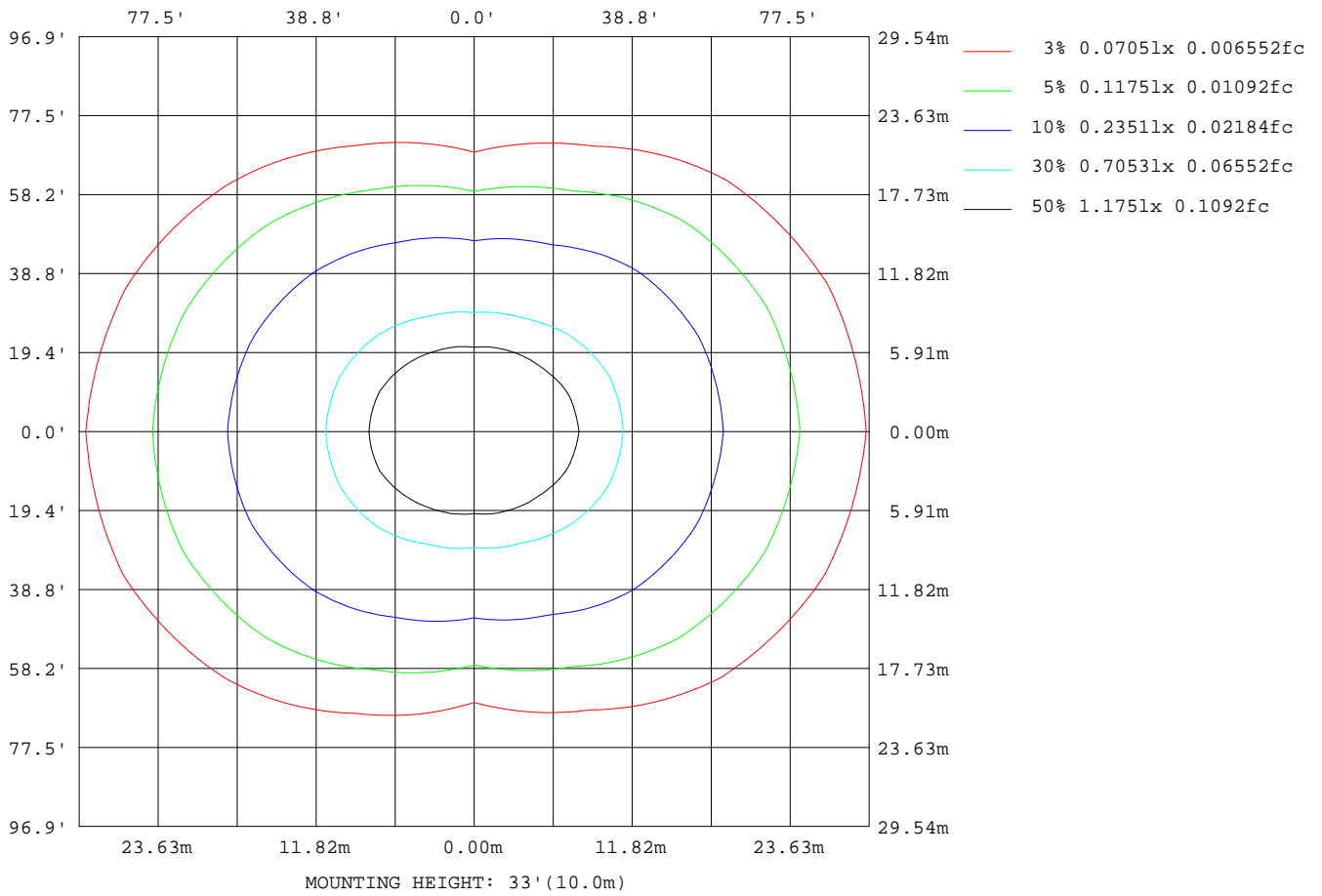
γ Range: 0 - 180DEG
 γ Interval: 0.5DEG
 Test System: EVERFINE GO-R5000_V2 SYSTEM V2.00.444
 Humidity: 60.5%
 Test Distance: 2.617m [K=1.0000]
 Remarks: File No.: WT-F-504-3206-01-A

Checker: Near Gao

Assessor: Akin Xu

ISOLUX DIAGRAM

Test:U:120.18V I:0.2341A P:27.900W PF:0.9916 Freq:60.00Hz Lamp Flux:1633.83x1 lm		
NAME:	TYPE:	WEIGHT:
SPEC.:	DIM.:	SERIAL No.:
MFR.:	SUR.:	Shielding Angle:



C Range: 0 - 360DEG
 C Interval: 22.5DEG
 Test Speed: HIGH
 Temperature: 25.1DEG
 Operators: Wilson
 Test Date: 2022-12-09

γ Range: 0 - 180DEG
 γ Interval: 0.5DEG
 Test System: EVERFINE GO-R5000_V2 SYSTEM V2.00.444
 Humidity: 60.5%
 Test Distance: 2.617m [K=1.0000]
 Remarks: File No.: WT-F-504-3206-01-A

Checker: Near Gao

Assessor: Akin Xu

LED Avg.L Report

Test:U:120.18V I:0.2341A P:27.900W PF:0.9916 Freq:60.00Hz Lamp Flux:1633.83x1 lm		
NAME:	TYPE:	WEIGHT:
SPEC.:	DIM.:	SERIAL No.:
MFR.:	SUR.:	Shielding Angle:

AvgL	cd/m2
L_0~180(65)av	6999
L_0~180(75)av	10767
L_0~180(85)av	30848
L_90~270(65)av	2642
L_90~270(75)av	2099
L_90~270(85)av	948
L_45(65)av	5411
L_45(75)av	7642
L_45(85)av	20527

Standard: GB/T 29293-2012

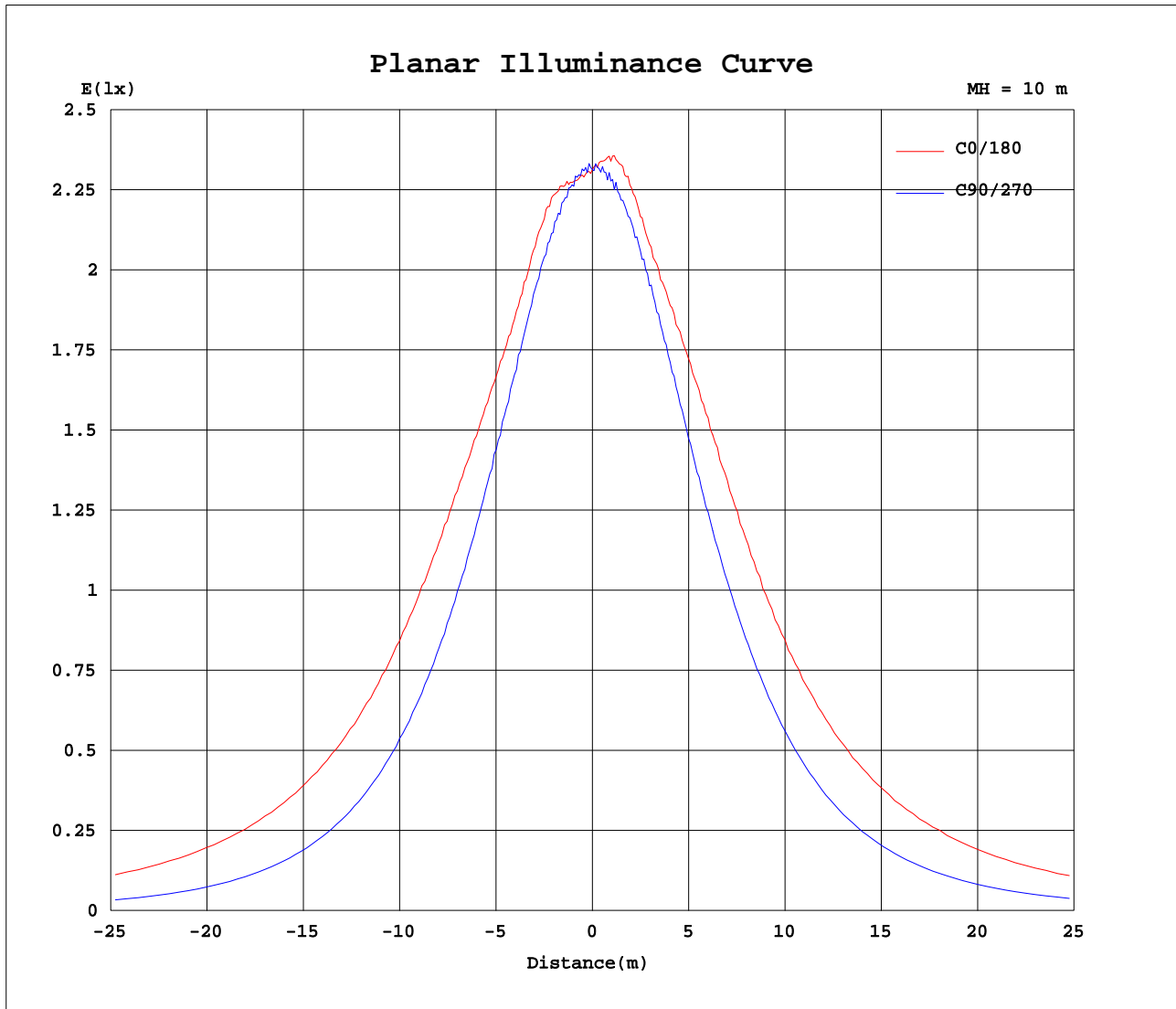
C Range: 0 - 360DEG
 C Interval: 22.5DEG
 Test Speed: HIGH
 Temperature:25.1DEG
 Operators:Wilson
 Test Date:2022-12-09

γ Range: 0 - 180DEG
 γ Interval: 0.5DEG
 Test System:EVERFINE GO-R5000_V2 SYSTEM V2.00.444
 Humidity:60.5%
 Test Distance:2.617m [K=1.0000]
 Remarks: File No.: WT-F-504-3206-01-A

Checker: Near Gao

Assessor: Akin Xu

Planar Illuminance Curve



C Range: 0 - 360DEG
 C Interval: 22.5DEG
 Test Speed: HIGH
 Temperature: 25.1DEG
 Operators: Wilson
 Test Date: 2022-12-09

γ Range: 0 - 180DEG
 γ Interval: 0.5DEG
 Test System: EVERFINE GO-R5000_V2 SYSTEM V2.00.444
 Humidity: 60.5%
 Test Distance: 2.617m [K=1.0000]
 Remarks: File No.: WT-F-504-3206-01-A

Checker: Near Gao

Assessor: Akin Xu

LUMINOUS DISTRIBUTION INTENSITY DATA

Test:U:120.18V I:0.2341A P:27.900W PF:0.9916 Freq:60.00Hz Lamp Flux:1633.83x1 lm		
NAME:	TYPE:	WEIGHT:
SPEC.:	DIM.:	SERIAL No.:
MFR.:	SUR.:	Shielding Angle:

Table--1

UNIT: cd

C(DEG) γ (DEG)	0	22.5	45	67.5	90	112.5	135	157.5	180	202.5	225	247.5	270	292.5	315	337.5			
0	231	231	231	231	231	231	231	231	231	231	231	231	231	231	231	231			
5	230	230	230	229	232	232	235	238	238	237	235	233	233	230	230	231			
10	235	234	230	227	228	232	238	239	240	241	239	234	229	228	231	234			
15	236	235	231	222	223	229	235	236	237	236	236	232	226	225	232	237			
20	232	231	228	219	214	224	229	232	236	234	231	228	218	222	230	232			
25	232	227	220	211	205	215	222	234	239	234	225	220	210	216	223	229			
30	236	228	213	204	194	206	219	235	243	237	222	210	199	208	216	229			
35	238	229	208	192	181	193	213	236	244	236	218	199	187	197	211	231			
40	240	229	204	179	167	181	210	233	242	234	213	186	174	185	208	232			
45	238	227	199	164	152	168	204	229	239	229	206	174	159	171	204	231			
50	236	223	192	151	134	155	196	222	233	223	198	162	142	157	199	226			
55	229	216	183	136	116	142	186	216	227	214	188	148	124	144	191	222			
60	224	208	173	124	96.4	128	176	207	220	206	177	134	105	130	182	214			
65	217	200	162	109	76.6	113	165	200	212	197	164	118	85.2	117	172	206			
70	212	191	151	93.7	55.3	98.0	154	192	205	189	152	102	64.4	103	161	198			
75	204	184	140	78.5	35.1	82.5	144	186	200	181	140	85.1	43.6	88.1	150	191			
80	200	178	131	64.9	16.5	69.8	136	180	194	175	131	69.7	24.1	74.3	141	184			
85	196	175	126	57.6	3.59	63.7	133	178	193	171	124	59.6	8.39	64.0	136	181			
90	200	177	129	60.1	0.57	67.0	138	184	197	175	125	57.5	0.96	62.2	136	182			
95	206	184	135	65.7	1.55	71.4	142	189	203	179	130	61.7	0.86	67.9	142	189			
100	211	188	139	70.3	3.25	70.0	146	192	205	182	133	64.0	2.22	72.8	147	193			
105	212	191	143	65.0	5.47	61.5	146	192	207	183	134	56.6	3.98	70.7	150	196			
110	213	191	142	57.0	7.86	50.8	134	189	204	182	126	46.6	6.11	62.7	150	196			
115	210	188	130	47.3	10.4	41.7	118	173	192	166	111	36.2	8.42	53.3	139	194			
120	198	173	114	39.2	12.2	39.9	101	152	171	147	94.5	32.4	10.3	43.6	123	178			
125	176	152	97.7	36.2	14.1	38.0	81.5	130	148	125	76.7	31.2	12.0	40.1	105	157			
130	152	130	79.8	36.9	15.6	36.3	65.1	106	123	104	59.9	30.0	13.5	36.3	86.3	134			
135	126	107	63.2	35.3	18.1	34.7	56.7	83.5	96.8	79.6	50.2	29.2	15.1	37.8	68.1	111			
140	100	84.0	53.8	33.6	21.3	33.3	52.4	65.4	74.4	62.0	46.8	28.4	18.8	36.4	57.4	86.8			
145	75.0	64.3	50.4	33.3	24.6	31.9	47.7	58.8	62.1	55.4	43.1	27.5	21.9	35.0	52.9	66.3			
150	61.9	57.2	46.5	32.4	26.3	29.0	43.2	52.2	55.0	49.8	39.3	27.4	24.2	33.4	48.2	58.6			
155	54.5	51.3	42.5	31.7	27.4	30.7	38.5	46.0	48.3	44.0	35.6	27.8	26.4	32.3	43.5	52.0			
160	47.8	44.8	38.0	30.4	28.1	30.5	34.6	39.5	41.1	38.1	32.4	28.2	27.1	31.7	38.7	45.5			
165	40.7	38.5	34.5	24.2	22.1	27.5	31.8	34.3	35.2	33.5	30.8	27.2	20.5	29.4	34.7	38.8			
170	34.4	33.5	24.5	17.0	17.9	19.0	23.5	30.8	31.6	30.9	29.2	16.3	17.0	23.3	32.5	34.0			
175	31.5	19.8	16.9	19.9	19.0	18.8	18.5	18.4	28.1	28.5	20.1	16.8	18.4	18.6	25.9	30.5			
180	15.4	15.4	15.4	15.4	15.4	15.4	15.4	15.4	15.3	15.3	15.3	15.3	15.3	15.3	15.3	15.3			

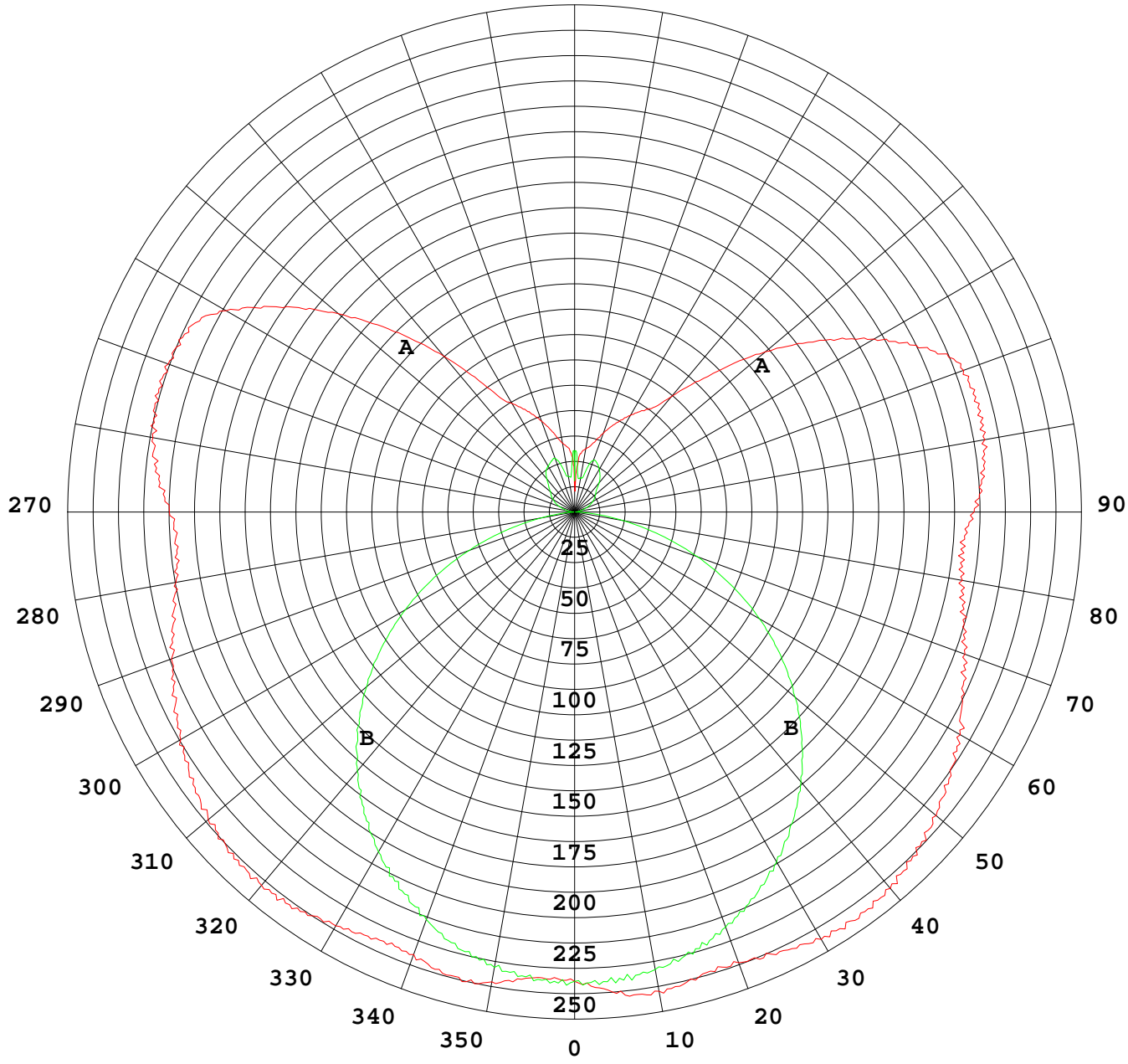
C Range: 0 - 360DEG
 C Interval: 22.5DEG
 Test Speed: HIGH
 Temperature:25.1DEG
 Operators:Wilson
 Test Date:2022-12-09

γ Range: 0 - 180DEG
 γ Interval: 0.5DEG
 Test System:EVERFINE GO-R5000_V2 SYSTEM V2.00.444
 Humidity:60.5%
 Test Distance:2.617m [K=1.0000]
 Remarks: File No.: WT-F-504-3206-01-A

Checker: Near Gao

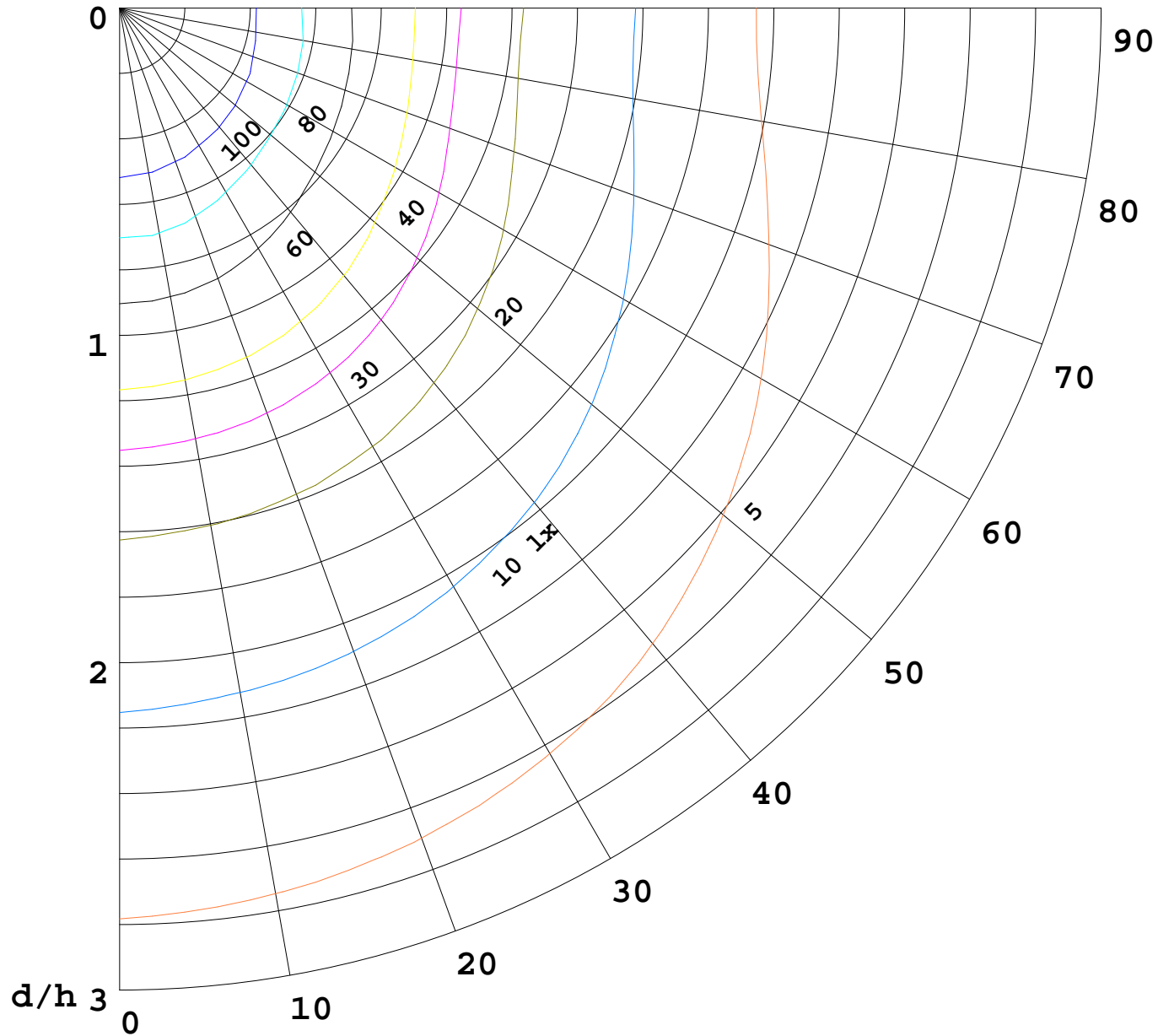
Assessor: Akin Xu

I (cd)



1000 lm

$K = 1$



F = 1000 lm
K = 0.7
Hcc = 0.8 m
Hfc = 0.0 m
Eave = 100 lx

	Pcc	Pw	Pfc
—————	70	50	30
—————	50	30	20

